

BPL201F

Broadband Power Line Carrier



The BPL201F is a Low Voltage Powerline Ethernet Wall Mount to allow users to install an in-home LAN easily without the need for new cabling. Users can connect the BPL201F Powerline Ethernet Wall Mount in any electrical socket in their home, office or Industry to deploy a LAN using the powerline network. The network can be connected to an internet gateway, such as an ADSL or cable modem, providing a convenient extension of the internet using the powerline grid.

With physical transfer rates up to 200 Mbps the BPL provide a large bandwidth to stream several high quality video signals while simultaneously delivering high speed internet access.

Any Ethernet-enabled device, such as a desktop computer, network printer, laptop computer, IP camera, could be connected to the BPL.

Based on DS2 technology, the BPL is fully remotely manageable via SNMP based software (NMS).

With its fast physical layer transfer rates up to 200 Mbps, the BPL can participate in a large number of multimedia applications, it is ready to receive high bandwidth multimedia signals without adding new wires. The advanced Class of Service (CoS) and priority management ensure that applications with real-time requirements, such as VoIP, streaming video performing even if other users in the network are downloading large files

Unique Features

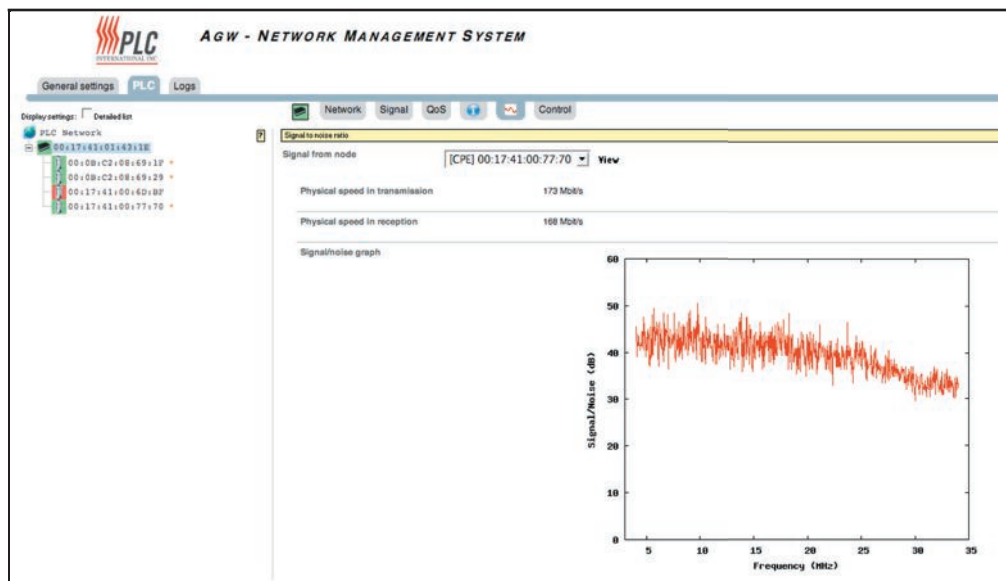
- 10/100Base T Fast Ethernet interface
- Bridge Forwarding Table for 64 MAC Addresses
- Remote configuration
- 802. Q VLAN & Optimized VLANs
- Priority classification according to 802.1P tags
- Programmable priority-classification engine (8-level priority queues)
- Integrated 802.1 D Ethernet Bridge with optimized Spanning Tree Protocol



Technical Specifications

Dimensions (mm)	93 x 62 x 37	Physical Speed	Up to 200 Mbps
Weight	195 g	Power spectral density	-56 dBmW/Hz
Standards Compliance	IEEE 802.3u, 802.1p, 802.1q	Chipset DS2	DSS9001
Ambient operating temperature (min-max)	0o C - +40o C	Available configuration	HE/REP/CPE
Interface	10/100BaseT Fast Ethernet, Powerline	Dynamic range	90 dB
Relative humidity w/o condensing (min-max)	20% - 95%	Frequency range	2 MHz – 34 MHz
Protection	IP20	Number of supported MAC address	64
MTBF	72000 h	Number of supported PLC nodes	32
Input voltage	100Vac – 240Vac	Number of VLANs	32
Input frequency	60Hz – 50Hz	Safety \$ EMI	CE
Power consumption	6,6W	Modulation	OFDM
Number of carrier	1536	Status indicator (LEDs)	Power on/ETH link/PLC link/activity

NMS Display



Chile

Barros Errázuriz 1953, Piso 7,
Providencia, Santiago, Chile
Tel (562) 397 6000
Fax (562) 269 8728
email: contacto@plci-ge.com

USA

2100 Ponce de Leon Blv
Suite 1178
Coral Gables, FL 33134; USA
Tel (786) 552 0035
Fax (786) 552 0037
email: plci@plcpower.com

Venezuela

Calle 8, Edif PLC
Caracas, Venezuela
Tel (582) 212 243 6055
Fax (58) 212 243 6064
email: info@plc.com.ve